

Advice to authors

Your illustrations will be shown to best advantage if you follow the brief set of instructions below. Please read them carefully. Thank you.

The Publisher

Preparation of line drawings

Drawings should be in the desired final size and executed in indelible black ink.

Important points to note are: the thickness of lines, size of inscrip-

tions, size of measuring points, and adequate spacing of shaded and dotted areas.

Words should be in the proper upper- and lowercase letters and not all in CAPITAL letters.

Following are the optimal sizes *after* reduction:

Capital letters and numbers: 2 mm

Lowercase letters: 1.6 mm

ABCDEFGHIJKLMNOPQRSTUVWXYZ

abcdefghijklmnopqrstuvwxyz

1234567890 1.5° III IV VIII IX ∞ % ≈

[(= - + x ÷ ! ? : " " ,)] (A) (B) (a) (b)

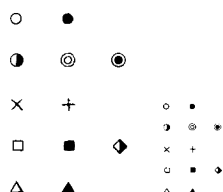
ABCDEFGHIJKLMNOPQRSTUVWXYZ

abcdefghijklmnopqrstuvwxyz

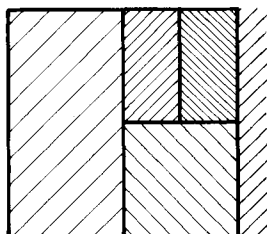
1234567890 1.5° III IV VIII IX ∞ % ≈

[(= - + x ÷ ! ? : " " ,)] (A) (B) (a) (b)

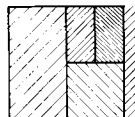
①



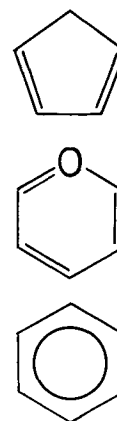
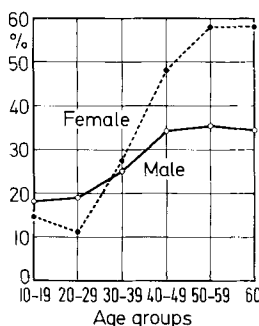
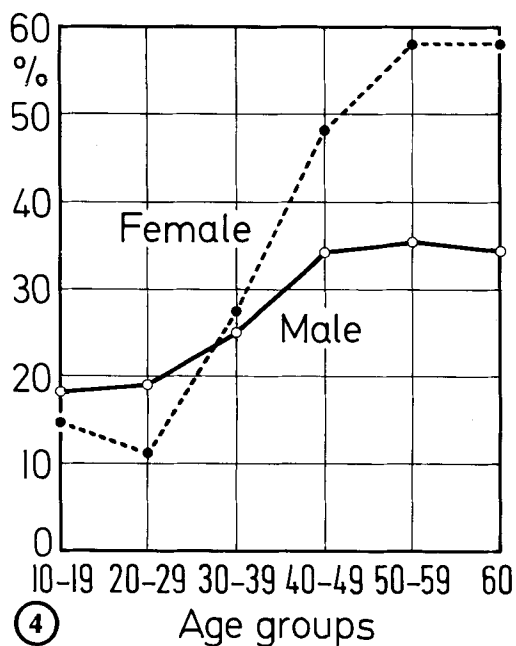
②



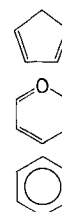
③



samples 1-5 show
the original size and
reduction × 50%



⑤



Selection and preparation of illustration material for halftones (photographs, micrographs, X-ray films, instrument traces etc.)

Photographs should be sharp, well-contrasted glossy prints of the original negative, trimmed at right angles. Halftone illustrations should fit the format of the printed page (print area) so that 1:1 reproduction is possible. If reduction is absolutely necessary, please state the desired scale. Mark or crop marginal portions that are not required (at right angles, please).

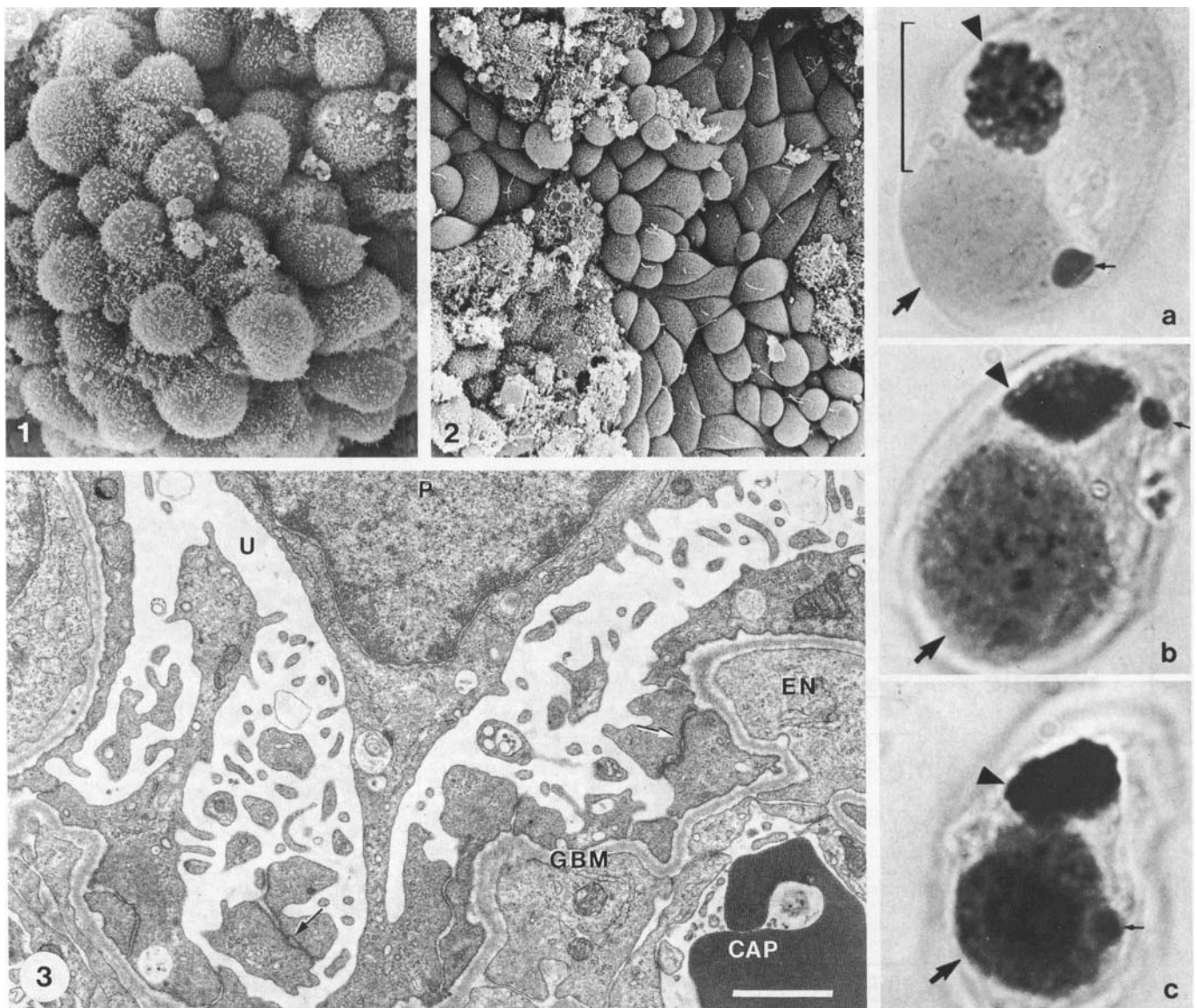
Illustrations that are to appear together should be mounted as plates and, together with the legends,

should not exceed the print area. Illustrations must be **mounted on paper-thin flexible material**. Do not use thick cardboard.

Please indicate the significant parts of X-rays on a copy or overlay.

For lettering, marks and scales, use rub-on labelling like Letraset, Mecanorma, or Artist-Aid. **Inscriptions** should be a **maximum of 3 mm** high. Please protect them with an overlay.

Unless they interfere with important information in the illustration, numbers or lowercase letters that denote the sequence of illustrations in plates should be inserted in the lower left-hand corner of the illustrations. In illustrations that provide poor contrast for labelling, i.e. diffuse or mottled backgrounds, white letters or numbers are preferable. If necessary, use a white round background with black lettering (Mecanorma or Artist-Aid).



Illustrations reprinted with permission